

# LEX

## 2715BZ

### LARGE WALL MOUNT LANTERN

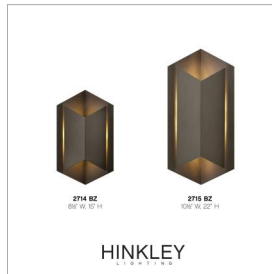
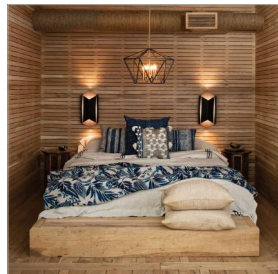
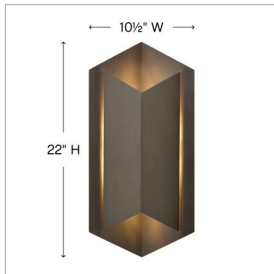
Lex is a lantern formed out of geometric shapes that embodies modern design. Architectural in look and feel, Lex offers a striking silhouette in durable aluminum combined with LED technology for a bold contemporary statement.

DETAILS	
FINISH:	Bronze
MATERIAL:	Aluminum
DIMMABLE:	YES - CL TYPE DIMMER (SSL7A)

DIMENSIONS	
WIDTH:	10.5"
HEIGHT:	22"
WEIGHT:	5lb
BACK PLATE:	4.5"W X 6.75"H
EXTENSION:	5.5"
TOP TO OUTLET:	11"

LIGHT SOURCE	
LIGHT SOURCE:	Integrated LED
LED NAME:	LESF-2
WATTAGE:	12w LED *Included
VOLTAGE:	120v
LUMENS:	600
CRI:	90
INCANDESCENT EQUIVALENCY:	1 x 60w
DIMMABLE:	YES - CL TYPE DIMMER (SSL7A)

SHIPPING	
CARTON LENGTH:	25
CARTON WIDTH:	13.5
CARTON HEIGHT:	9
CARTON WEIGHT:	7



#### PRODUCT DETAILS:

- Aluminum material ensures this piece can withstand strenuous outdoor conditions
- LED components carry a 5-year limited warranty
- Wet Rated
- Energy-efficient integrated LED - safer for the environment and low maintenance
- Mounted at a point of entry, wall mount lights provide safety and security with a welcoming element
- Outdoor finishes carry a 2-year warranty
- Exclusively available in High Performance LED
- Bold lines and a clean, minimalist style complement contemporary architecture

# HINKLEY

HINKLEY  
33000 Pin Oak Parkway  
Avon Lake, OH 44012

PHONE: (440) 653-5500  
Toll Free: 1 (800) 446-5539

[hinkley.com](http://hinkley.com)