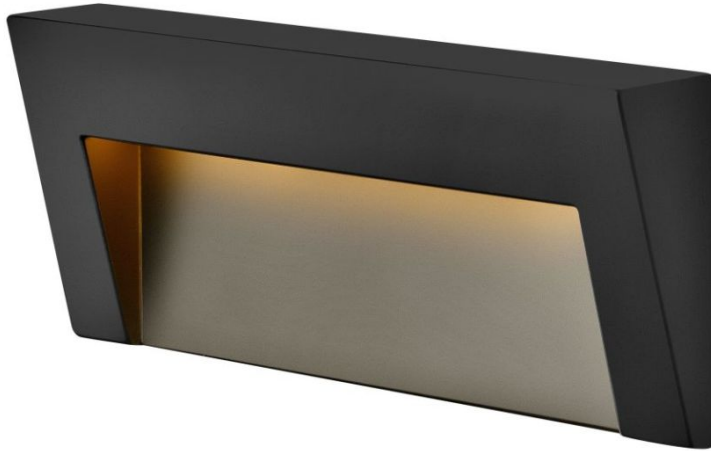


TAPER

1557SK

DECK SCONCE WIDE HORIZONTAL

Seamlessly blending into architectural elements inside or outside the home, the Taper series beautifully illuminates stairs, walkways, or patio spaces, enhancing the outdoor lighting experience. Made of aluminum and featuring an etched glass lens, this sconce mounts flush to the surface and includes an integrated LED light for over 40,000 hrs of light. This low-voltage fixture is practical and safer, especially in an outdoor setting. Expand time spent in outdoor living spaces and increase safety and security.



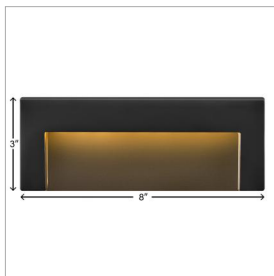
DETAILS	
FINISH:	Satin Black
MATERIAL:	Aluminum
GLASS:	Etched
DIMMABLE:	YES - WITH MLV ON TRANSFORMER PRIMARY

DIMENSIONS	
WIDTH:	8"
HEIGHT:	3"
DEPTH:	1
BACK PLATE:	8"W X 3"H
EXTENSION:	1"

LIGHT SOURCE	
LIGHT SOURCE:	Integrated LED
LED NAME:	ETP25
WATTAGE:	2.50w LED *Included
VOLTAGE:	12v
VOLT AMPS:	3
LUMENS:	300
CRI:	90
INCANDESCENT EQUIVALENCY:	1 x 25w
DIMMABLE:	YES - WITH MLV ON TRANSFORMER PRIMARY
TRANSFORMER REQUIRED:	Yes

MOUNTING	
LEAD WIRE:	1 X 60"

SHIPPING	
CARTON LENGTH:	3.4
CARTON WIDTH:	1.4
CARTON HEIGHT:	8.5
CARTON WEIGHT:	1



PRODUCT DETAILS:

- Wet Rated
- A wiring kit is supplied
- Energy-efficient integrated LED - safer for the environment and low maintenance
- 12V systems with LED bulbs consume less energy leading to lower electricity bills and a reduced carbon footprint
- ADA compliant design provides added accessibility and maximum clearance
- Step lights are a versatile way to illuminate areas of foot traffic
- The Hinkley Home Automation App allows you to control your landscape lights anytime, anywhere. You can turn dimmers on/off and adjust sliding brightness settings remotely.
- Bold lines and a clean, minimalist style complement contemporary architecture

HINKLEY

HINKLEY
33000 Pin Oak Parkway
Avon Lake, OH 44012

PHONE: (440) 653-5500
Toll Free: 1 (800) 446-5539

hinkley.com