

PALMA

41927HB

SMALL PENDANT

Palma charmingly blends European elegance with timeless touches of the classic pineapple motif. Sophisticated and modern, Palma is infused with a dash of Old World glamour. This enduring design creates a balanced sensation of both refinement and ease as part of its overall appeal.

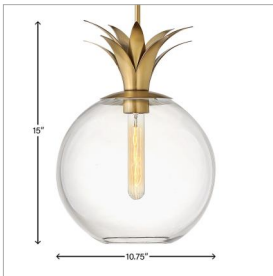
DETAILS	
FINISH:	Heritage Brass
MATERIAL:	Steel
GLASS:	Clear
SLOPE DEGREE:	90
DIMMABLE:	YES - WITH DIMMABLE LAMP (NOT INCLUDED)

DIMENSIONS	
WIDTH:	10.8"
HEIGHT:	15"
WEIGHT:	4.8lb

LIGHT SOURCE	
LIGHT SOURCE:	Socketed
WATTAGE:	1-10w Med. LED, 100w Equiv.
VOLTAGE:	120v

MOUNTING	
CANOPY:	6" Dia.
LEAD WIRE:	1 X 120"
MAX HEIGHT:	45.5

SHIPPING	
CARTON LENGTH:	13.9
CARTON WIDTH:	13.9
CARTON HEIGHT:	20.3
CARTON WEIGHT:	7



PRODUCT DETAILS:

- Dry Rated
- Includes (1) 6" stem and (2) 12" stems to customize hanging height
- Can be hung on a sloped ceiling
- Shown with T-style bulbs (not included)
- Merging the best of traditional and modern elements with a sophisticated and streamlined look