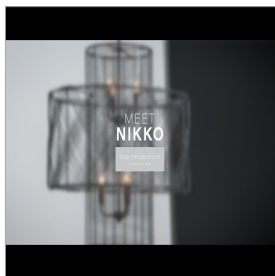


lisa mcdennon
COLLECTION



PRODUCT DETAILS:

- Dry Rated
- Includes (1) 6" stem and (2) 12" stems to customize hanging height
- Eclectic style that mixes unconventional elements; Unique and sophisticated designs that feel modern and vintage at the same time
- Part of the Lisa McDennon Collection of eclectic lighting designs, blending traditional and modern West Coast styles with striking natural elements, sculptural silhouettes, and layered textiles

NIKKO

41065BLK

MEDIUM MULTI TIER CHANDELIER

Nikko is a stunning study in contrasts: simultaneously bold and airy, minimalist yet intricate. Its sleek wire design is woven into a striking pendant that evenly radiates light throughout. The transitional silhouette, infused with a subtle coastal nuance, is available in either Light Ashwood or Black finish options. Nikko is part of the Lisa McDennon Collection.

DETAILS	
FINISH:	Black
MATERIAL:	Steel
DIMMABLE:	YES - WITH DIMMABLE LAMP (NOT INCLUDED)

DIMENSIONS	
WIDTH:	26"
HEIGHT:	27.8"
WEIGHT:	30.5lb

LIGHT SOURCE	
LIGHT SOURCE:	Socketed
WATTAGE:	6-5w Cand. LED, 60w Equiv.
VOLTAGE:	120v

MOUNTING	
CANOPY:	5.25" Dia.
LEAD WIRE:	1 X 144"
MAX HEIGHT:	58

SHIPPING	
CARTON LENGTH:	30
CARTON WIDTH:	30.8
CARTON HEIGHT:	30
CARTON WEIGHT:	38.1

HINKLEY

HINKLEY
33000 Pin Oak Parkway
Avon Lake, OH 44012

PHONE: (440) 653-5500
Toll Free: 1 (800) 446-5539

hinkley.com