

Heritage
COLLECTION



HAMILTON

2005DS

LARGE WALL MOUNT LANTERN

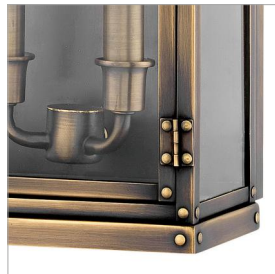
Hamilton's sleek profile, constructed of solid brass, blends classic early American style with industrial influence. Quality and artistry is at the core of this design, with the pocket lantern featuring prominent rivets and a functional door in its gleaming, authentic Dark Antique Brass finish.

DETAILS	
FINISH:	Dark Antique Brass
MATERIAL:	Brass
GLASS:	Clear
DIMMABLE:	YES - WITH DIMMABLE LAMP (NOT INCLUDED)

DIMENSIONS	
WIDTH:	8.5"
HEIGHT:	18.3"
WEIGHT:	7.5lb
BACK PLATE:	7.25"W X 16.75"H
EXTENSION:	5"
TOP TO OUTLET:	9.25"

LIGHT SOURCE	
LIGHT SOURCE:	Socketed
WATTAGE:	2-5w Cand. LED, 60w Equiv.
VOLTAGE:	120v

SHIPPING	
CARTON LENGTH:	22.5
CARTON WIDTH:	11.5
CARTON HEIGHT:	10.5
CARTON WEIGHT:	9.5



PRODUCT DETAILS:

- Wet Rated
- Mounted at a point of entry, wall mount lights provide safety and security with a welcoming element
- Classic lines and heritage details complement traditional architecture
- Outdoor finishes carry a 2-year warranty
- Part of the Heritage Collection, honoring Hinkley's heritage as an outdoor lantern company since 1922; traditional silhouettes feature enduring brass elements and classic detailing

HINKLEY

HINKLEY
33000 Pin Oak Parkway
Avon Lake, OH 44012

PHONE: (440) 653-5500
Toll Free: 1 (800) 446-5539

hinkley.com