

AMELIA

3126PT

MEDIUM PENDANT

Amelia's classic pendant design reinvents vintage details with a cast glass fitter, cast metal trim ring and ornamental clasps. The Polished White finish will infuse any space with a dash of fresh American style.

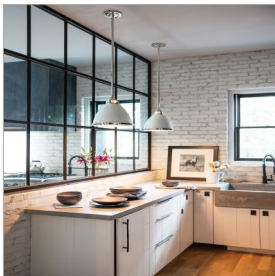
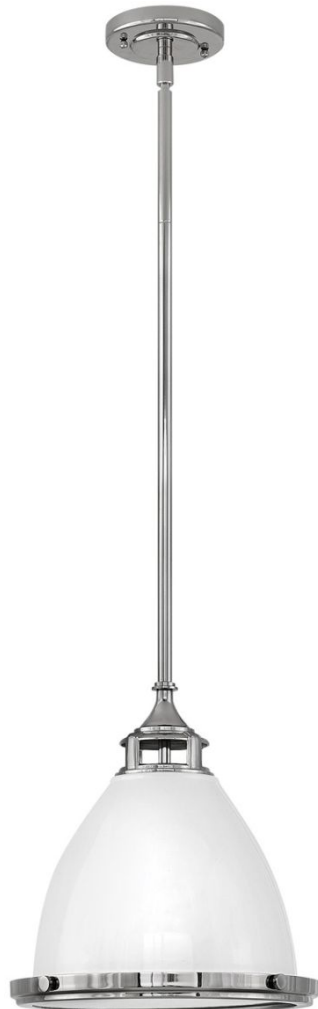
DETAILS	
FINISH:	Polished White
MATERIAL:	Steel
GLASS:	Etched Opal Lens
SLOPE DEGREE:	90
DIMMABLE:	YES - WITH DIMMABLE LAMP (NOT INCLUDED)

DIMENSIONS	
WIDTH:	13"
HEIGHT:	13"
WEIGHT:	7.7lb

LIGHT SOURCE	
LIGHT SOURCE:	Socketed
WATTAGE:	1-12w Med. LED, 100w Equiv.
VOLTAGE:	120v

MOUNTING	
CANOPY:	5.25" Dia.
LEAD WIRE:	1 X 120"
MAX HEIGHT:	46

SHIPPING	
CARTON LENGTH:	14.6
CARTON WIDTH:	14.6
CARTON HEIGHT:	16
CARTON WEIGHT:	11



PRODUCT DETAILS:

- Dry Rated
- Includes (1) 6" stem and (2) 12" stems to customize hanging height
- Can be hung on a sloped ceiling
- Angular lines, a bold finish, simple shape and sturdy details merge for a robust but pared down industrial design

HINKLEY

HINKLEY
33000 Pin Oak Parkway
Avon Lake, OH 44012

PHONE: (440) 653-5500
Toll Free: 1 (800) 446-5539

hinkley.com